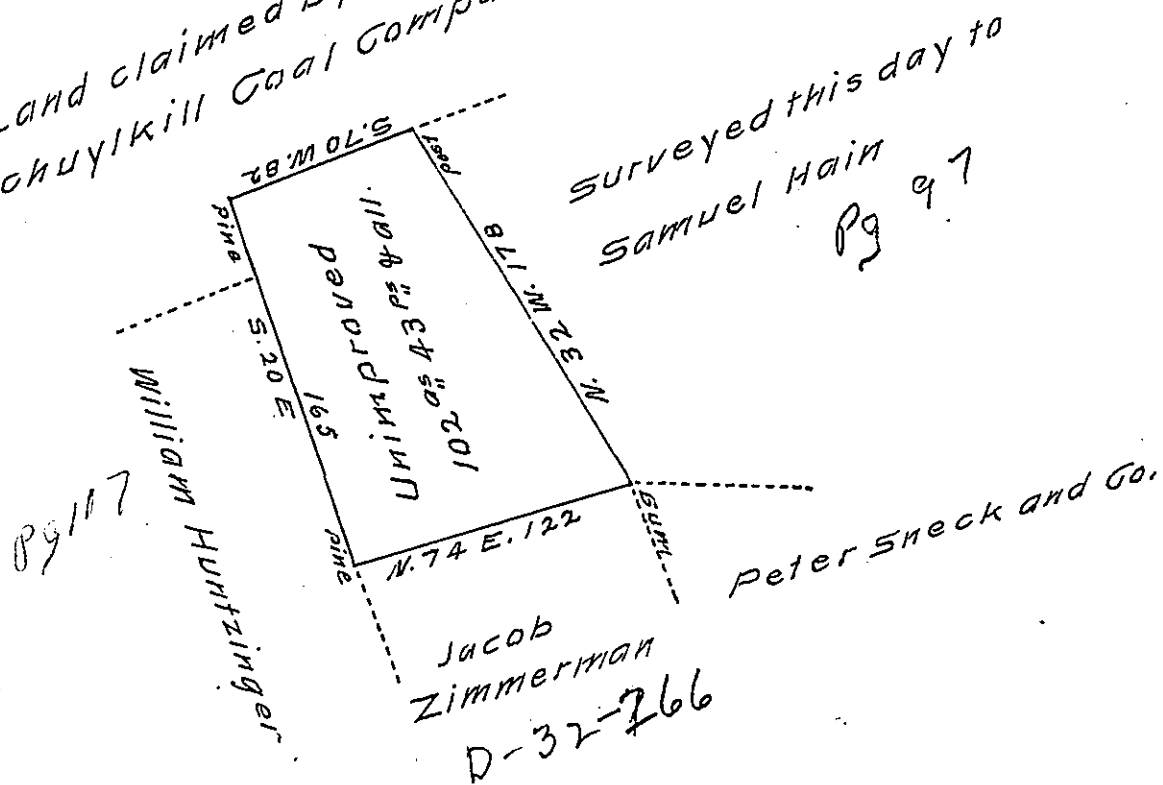


Land claimed by the New York and Schuylkill Coal Company



Situate in Norwegian and Barry township Schuylkill County containing one hundred and two acres and forty three perches and the allowance of six per cent surveyed on the 6th day of August 1829 in pursuance of a warrant dated the 26th day of March 1829 granted Isaac Christ

F. Lauderbrun, Dep. sur.

To Gabriel Hiester Esquire }
 Surveyor General of Penna }

Schuylkill

The above land is claimed by the New York and Schuylkill Coal Company

F. Lauderbrun D.S.

The warrant calls for land in Pinegrove township but actually lies as described above

F. L.

IN TESTIMONY that the above is a copy of the original remaining on file in the Department of Internal Affairs of Pennsylvania, made conformably to an Act of Assembly approved the 16th day of February, 1833, I have hereunto set my Hand and caused the Seal of said Department to be affixed at Harrisburg, this tenth day of February 1908

Henry Hoover
 Secretary of Internal Affairs.